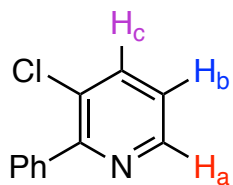
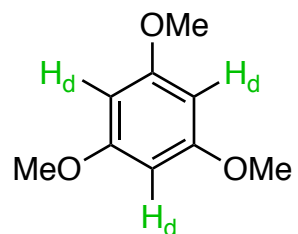


3-Chloro-2-phenylpyridine (**2**)



2



1,3,5-trimethoxybenzene
(internal standard)

quantitative ¹H-NMR, CDCl₃, 500.13 MHz, 300 K

full scale, after bulb-to-bulb distillation

$$\text{wt\%} = \frac{m(\text{Standard}) \times M_w(\mathbf{2}) \times \text{Molar Ratio} \times P(\text{Standard})}{m(\mathbf{2}) \times M_w(\text{Standard})} > 99\%$$

m (**2**) = 12.1 mg; M_w (**2**) = 189.03 g/mol

m (Standard) = 9.9 mg; M_w (Standard) = 168.19 g/mol

P (Standard) = 99%; Molar Ratio = (1.09/1) / (3.00/3) = 1.09

